

PRACTICAL BIOETHICS

Our 40th Anniversary Announcing a Year of Celebration!

The Center is celebrating 40 years of engaging **head**, **heart** and **hands** in response to ethical issues in health and healthcare.





We call our work “practical bioethics” because the Center applies the principles of bioethics – autonomy, beneficence, nonmaleficence and justice – to real-life challenges and decisions in health and healthcare. Some of these challenges apply to specific groups, such as doctors, nurses, healthcare IT, CEOs and public officials. Others, such as serious illness and end-of-life care, eventually apply to each and every one of us!


With your support over the past four decades, we have:

- ✓ Improved care for the seriously ill
- ✓ Expanded bioethics education
- ✓ Provided a stronger voice in health and healthcare for all people

Today we partner with people and organizations across the country to integrate ethics into all aspects of healthcare and to pioneer new strategies to ensure equity and justice.

 Our Ethical AI Initiative leaders are developing and disseminating interventions that lessen the ethical problems and risks posed by Artificial Intelligence systems in healthcare.

 Our bioethicists are educating young doctors and nurses on how to use the principles of ethics to better communicate and care for patients and families.

 Our clinical ethicists are helping patients, families, providers and others to resolve uncertainty or conflict in value-laden concerns about healthcare.

40th ANNIVERSARY EVENTS

Anniversary Kickoff
Guidance at the Crossroads of Decision

Let's Talk about Practical Bioethics
A series of parlor gatherings

Rosemary Flanigan Lecture
Listening to Patients and Their Families

40th Anniversary Dinner

YOUR FALL 2023 NEWSLETTER IS GOING DIGITAL

Be sure to receive your copy!

Update your email address by contacting Monica at mdelles@PracticalBioethics.org or 816-979-1359.

Visit PracticalBioethics.org/in-the-news to view all of our newsletters.

Welcome New Board Members



Raghu Adiga, MD

Infectious disease specialist Raghu began practicing medicine in Missouri in 1997 and served as Chief Medical Officer at Liberty Hospital for seven years until his appointment in June 2022 as President and CEO. Along with a special interest and involvement in medical ethics at the hospital level, he strongly believes that empathy, compassion and respect for fellow human beings are the bedrocks of healthcare delivery and that serving as a board member of the Center will allow him to make a bigger impact in his community, state and nation.



Mitzi G. Cardenas, MS

Mitzi is a healthcare executive with more than 30 years of experience in the industry. She currently serves as Executive Chief Administrative Officer for University Health. Since arriving in 2008, she has overseen the efforts to make Truman Medical Centers/University Health a front-runner in the use of leading-edge technology and innovation to improve patient safety and quality of care. In addition, she has led the planning and oversight of major construction projects and facility improvements, resulting from a comprehensive strategic planning process.



Anita Ho, PhD, MPH

Anita is a bioethicist and health services researcher with combined academic training and experience in philosophy, clinical/organizational ethics, public health and business, as well as a classically trained pianist with a master's degree in piano performance. She is currently an Associate Professor at the UCSF Bioethics Program, a Clinical Associate Professor at the Centre for Applied Ethics at the University of British Columbia, Senior Director of Ethics (Northern California) for Providence St. Joseph Health, an elected fellow of The Hastings Center and author of more than 80 publications.



Marvia Jones, PhD, MPH

As Health Director for the Kansas City (KCMO) Missouri Health Department, Marvia develops and implements strategies aimed at measurably improving the health and quality of life for all Kansas Citians, minimizing threats to healthy workplace culture, and ensuring that public health priorities align with community needs. Previously, she managed the Health Department's Division of Community Health and Education, including COVID-19 response, quality improvement, violence prevention and community outreach. She also serves on the KCMO Public Schools Board of Directors.

New Benefits for Sustainers Council Members

If you are or have considered becoming a monthly or legacy donor to the Center, we're offering a new Sustainer Council benefit. In appreciation for your generosity, we have expanded access to resources that until now have been provided exclusively to members of our Ethics Committee Consortium, which consists of more than 500 healthcare provider ethics committee members.

These resources include **10 webinars** throughout the year presented by national experts and the **Dispatch Monthly Newsletter**, offering guidance on exciting ethical issues. In the *Dispatch* you'll read about topics such as Blood Shortages, Moral Distress, Medical Negligence, Is Advance Care Planning Bogus, and much more. Webinar topics so

far for this year include Disability Ethics, LatinX Bioethics, Catholic Bioethics, and Social Determinants of Black Health.

We don't want to flood your in-box, so if you're a monthly donor or Legacy Society member, please let us know if you want to receive these resources by contacting Monica Delles at mdelles@PracticalBioethics.org or 816-979-1359.



New President and CEO Is Focusing on Health-Related Social Needs

James D. Stowe was in fourth grade when an adult asked what he wanted to be when he grew up. He answered that he wanted to be a PhD so that he could be expert.

That aspiration may have been realized most recently on January 30, 2023, his first day as the Center's third President and CEO in its nearly 40-year history.

Stowe grew up in Manhattan, Kansas. His awareness of changing demographics and the opportunities those changes represented led him to specialize in gerontology for his M.S. in Family Studies and Human Services at Kansas State University and his PhD in Human Environmental Sciences at the University of Missouri.

In 2009, Stowe met with John Carney, then Vice President of Aging and End of Life at the Center. In addition to pioneering work in advance care planning, the Center coordinated the early years of the region's first major initiative to address aging in place needs of older adults.

MARC Years

Stowe's next encounter with the Center grew out of his role at the Mid-America Regional Council (MARC), which he joined as Director of Aging and Adult Services in 2017.

"John Carney and the Center, among other thought leaders, came to MARC in 2016 to drive the expansion of integrated healthcare models such as MARC's Mid-America Community Support Network," said Stowe. "The idea was to integrate a variety of community-based services known



to improve health outcomes and quality of life into the healthcare delivery system, as well as to reduce healthcare costs."

By the time Stowe left MARC, he oversaw a staff of 20 and budget over \$10 million with a national reputation for leading one of the top-performing Area Agencies on Aging.

New Priorities

Topping the list of areas Stowe plans to address at the Center is revenue diversification.

Priorities include:

- ✓ **integrating infrastructure to serve all of the organization's initiatives;**
- ✓ **furthering efforts to advance diversity, equity, inclusion and justice;**
- ✓ **exploring ways to refine mission, vision and values messaging; and**
- ✓ **ultimately, to grow the Center's imprint on national issues in health and healthcare.**

When Ethics Matters This is going to hurt...but it's the right thing to do

The patient was admitted to the hospital with COVID, but the doctor discovered he had metastatic colon cancer.

When the cancer didn't respond to the first round of chemotherapy, the hospital had to make a hard decision. The patient, who was undocumented, couldn't be given the second round of chemo for a month, but because the tumor blocked his large intestines, he would have to remain in the hospital and be tube fed to survive. If the doctors started the tube feeding, the hospital would not be compensated for the patient's month-long stay.

Some thought the patient should be discharged with comfort measures. The social worker asked the Center's ethics consultant, Ryan Pferdehirt, to review the case. "They'll listen to you," she said.

Ryan recommended that tube feeding be started, despite the cost, because the only way to know if chemotherapy would be beneficial was to keep the patient alive until the next round of chemotherapy, and the only way to keep him alive was to start him on tube feeding.

By providing clarity about the case based on principles of bioethics, Ryan was able to gain support for his recommendation from everyone involved. "This is going to hurt," one of them said referring to the financial hit, "but it's the right thing to do."

To learn more about Ethics Services offered by the Center, contact Ryan Pferdehirt at 816-979-1350 or rpferdehirt@practicalbioethics.org.

You Have Questions!



We have answers!

Whether you're just discovering bioethics or seeking solutions to a specific ethical issue in health and healthcare, our new FAQs website page is a great place to start:

- What is bioethics?
- What is ethics consultation?
- What is a healthcare ethics consultant?
- What are bioethics case studies?
- What is an ethics committee?
- What is the Ethics Committee Consortium?
- What clinical ethics services can CPB provide to my organization?
- What education programs and resources does CPB offer for free?
- Why should I care about Artificial Intelligence (AI) in health and healthcare?
- What is Advance Care Planning?
- What is Caring Conversations?
- What is TPOPP?
- How can CPB help me deal with a healthcare crisis?
- How is CPB funded?
- How can I support CPB's work?

Visit www.practicalbioethics.org/frequently-asked-questions/ for the answers today.

29th Annual Flanigan Lecture

Talia Goldenberg died at age 23 because her doctors, nurses and support staff failed to listen when Talia, her physician father and her mother repeatedly told them that Talia couldn't breathe. Talia's parents founded Talia's Voice: Projects for Patient Safety, which aims to change the culture in medicine so that no one else's child dies because people in charge won't listen.

Mark your calendar for September 20 when Talia's parents will present, *You can hear me, but are you listening?*



Thought Leadership

The Center is called upon by administrators, public health and elected officials, and the media to bring ethical perspective to local, regional and national issues in health and healthcare. Our time-intensive response to near daily calls for help demonstrates our commitment to education, to promote and protect the interests of those whose voices have not been heard or heeded, and to the just delivery of healthcare.

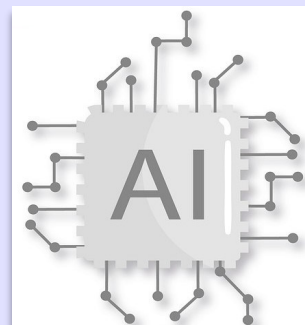


Tarris Rosell, PhD, DMin, Flanigan Chair at the Center, was recently asked to address healthcare workplace violence at a Kansas House Judiciary Committee hearing. Based on his involvement with past proposals on the topic, he called on Kansas legislators to do more preemptively rather than relatively ineffective deterrence measures.

<https://tinyurl.com/cpbpreventive>

Ethical AI

Recommendations for ethical AI in healthcare tend to focus on algorithm creation and offer little support to other stakeholders. The Center's Ethical AI Initiative sees opportunities to examine decisions that are made before they get to a data scientist's queue and after they are ready for production. On our blog, Lindsey Jarrett, PhD, Ethical AI Initiative Director, outlines four recommendations for systemic change in how adapted, augmented systems of healthcare technology can operate.



1. Create a community of stakeholders that can evaluate the use of machine learning from design to implementation.
2. Design an infrastructure for accountability and governance.
3. Develop standard processes that do not fluctuate with seats of power.
4. Monitor the inputs and outputs across your system.

<https://tinyurl.com/CPB4recommends>