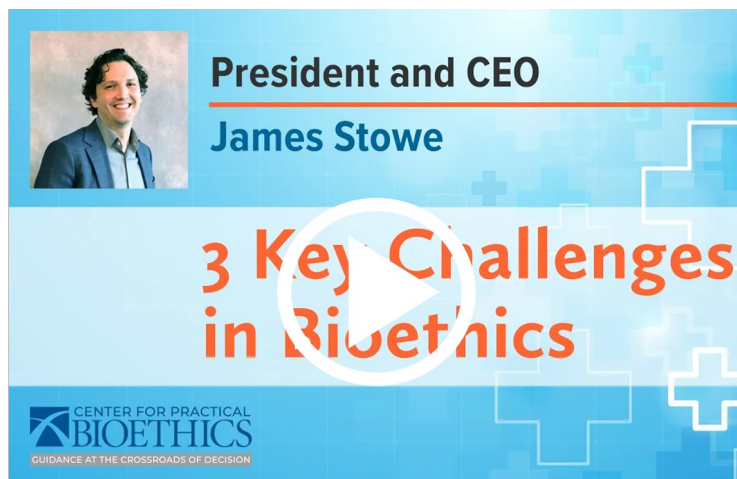


To ensure you continue to receive our emails,
please add us to your safe senders list.



James Stowe Three Challenges for Bioethics

[James Stowe, PhD](#), President and CEO of the Center for Practical Bioethics, describes how the Center is working to advance what he sees as three key challenges in practical bioethics today:

- How to make bioethics and ethics consultation available to patients and families at the bedside in hospitals, hospices and at other times when they have questions?
- How to select, develop and deploy AI and algorithms in healthcare?
- How to reach beyond the four walls of the clinic and into communal space to impact long-term health outcomes?

WATCH VIDEO



29th Annual Flanigan Lecture Listening to the Patient's Voice

Talia Goldenberg and her parents were unable to convince Talia's doctors, nurses and support staff to take her difficulty breathing seriously. After a botched code, Talia was left in a permanent vegetative state. Ten days later she was removed from life support and allowed to die.

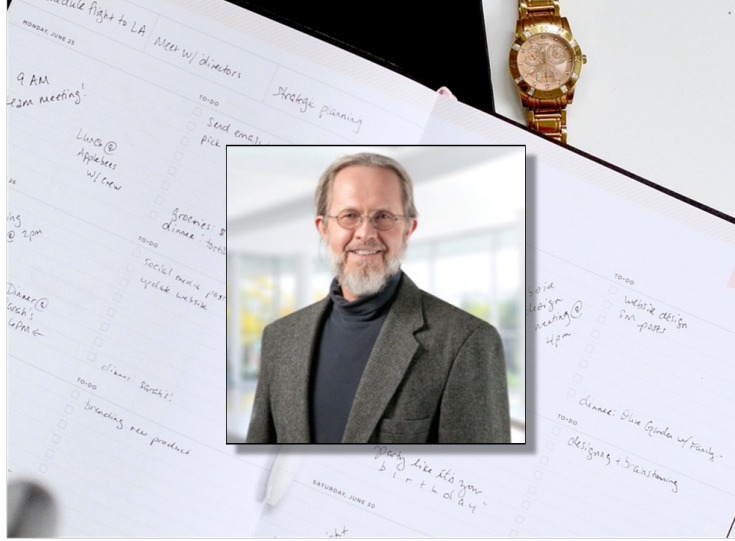
Her parents Jeff Goldenberg, MD, and Naomi Kirtner, MA, founded Talia's Voice: Projects for Patient Safety to change the culture in medicine so that nobody else's child dies because the people in charge won't listen.

You can meet Jeff and Naomi in person or virtually on **September 21** when they present the 29th Annual Rosemary Flanigan Lecture.

This year's Flanigan Lecture – the first public event in the Center's yearlong 40th anniversary celebration – is chaired by [Tarris \(Terry\) Rosell](#), Rosemary Flanigan Chair in Bioethics, and his life partner Ruth Rosell.

[Watch this video](#) to learn more from Terry about the program that begins at 7:00 PM preceded by a 6:00 reception. This event is free and open to the public. Registration is requested.

EVENT REGISTRATION



Flanigan Chair Describes 24 Hours in the Life of a Bioethicist

Five organizations engaged [Tarris \(Terry\) Rosell, D.Min, PhD](#), in a recent 24-hour period.

The issues he was asked to address included:

- Supervision of a bioethics research fellow's project on physician politicians.
- Arrangements for a meeting of the physician-clergy dialog group that Dr. Rosell co-founded 21 years ago.
- Providing an ethics consultation for an incarcerated patient who was found hanging in his cell in response to a page from a provider that contracts with the Center for clinical ethics services.
- Offering to meet to discuss ethics optimization at a small facility even though the facility currently contracts with the Center for basic services only.
- Responding to a skilled nursing facility's request for advice about the validity of a Durable Power of Attorney form that had been signed and notarized by a patient who had been documented as medically incapacitated three months prior.

As Dr. Rosell says, "It's what we do. Again and again." [Learn more](#) about how the Center can help your organization.

READ BLOG



40th Anniversary Kickoff Luncheon Seating Limited to First 150 Attendees

Maybe you're a hospital inpatient – or the patient is your mom or dad – facing a decision for which there is no right answer. Or maybe you're the patient's doctor or nurse and feel like you're being asked to do something morally wrong. Maybe there's an algorithm behind what's happening that you know very little about.

You're invited to join us for lunch on **October 3, 11:30 AM to 1:00 PM**, at The Fire House KC to kick off the Center's 40th anniversary year with a "fireside chat" about these issues and how the Center responds to them.

Our luncheon chairs, Raghu Adiga, MD, President and CEO of Liberty Hospital, and Mark R. Thompson, JD, Senior Counsel, Seigfreid Bingham, P.C., welcome you to join us! Space is limited. Purchase tickets now for only \$40 each.

[PURCHASE TICKETS](#)



[DONATE](#)

To ensure you continue to receive our emails,
please add us to your safe senders list.



Center for Practical Bioethics | 1111 Main Street, Suite 500, Kansas City, MO 64105

[Unsubscribe cleyland@practicalbioethics.org](mailto:unsubscribe@practicalbioethics.org)

[Update Profile](#) | [Constant Contact Data Notice](#)

